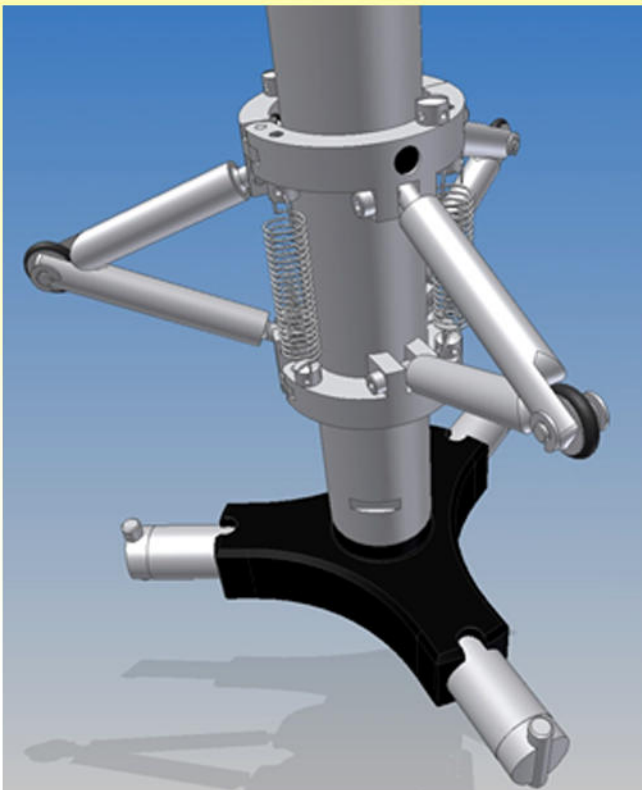
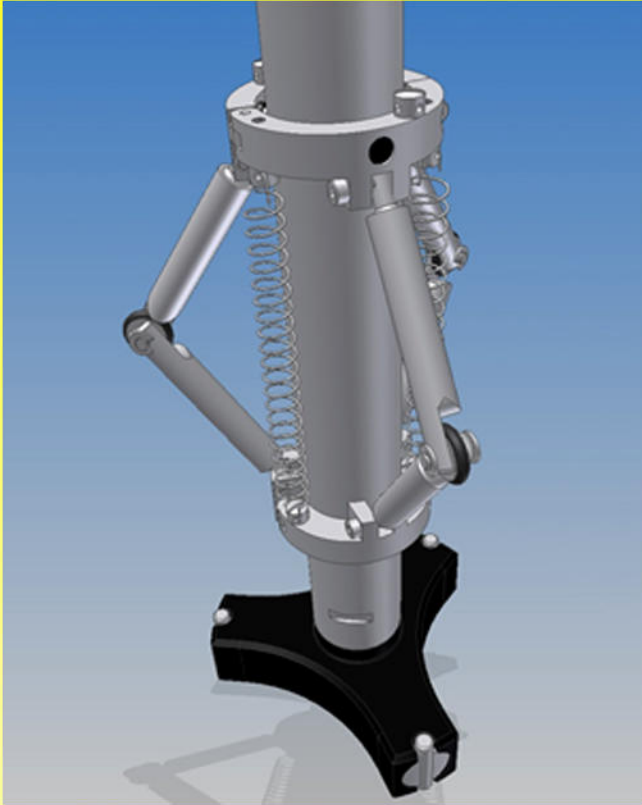


# **MICROTEST AG**

## **Precision Instruments**

### **Characteristics of the Tripod:**

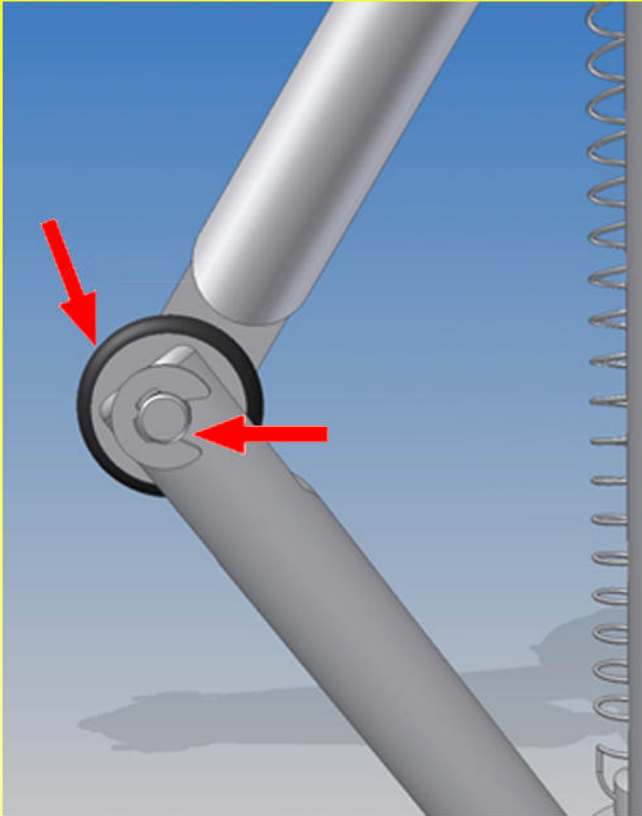


- The MICROTEST-Tripod will support the Internal Micrometer with extension, by pre-centring the instrument shaft in a deep bore.
- Using a extension with a length of 2 meter it is recommended to use our new MICROTEST-Tripod centring device after 2/3 of length, similar to Bessel's rule.
- Example: Using a extension of 4 meter, we recommend 2 to 3 Tripod and so on.
- Available Tripod sizes:  
Ø60-90 □ Ø90-140 □ Ø140-240  
Ø240-400

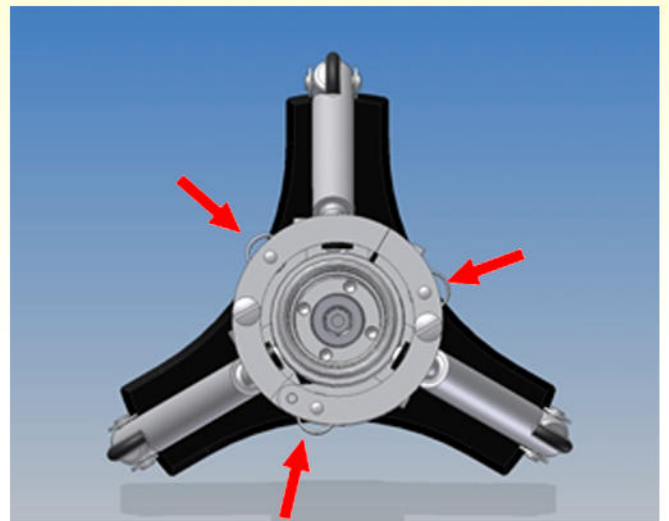
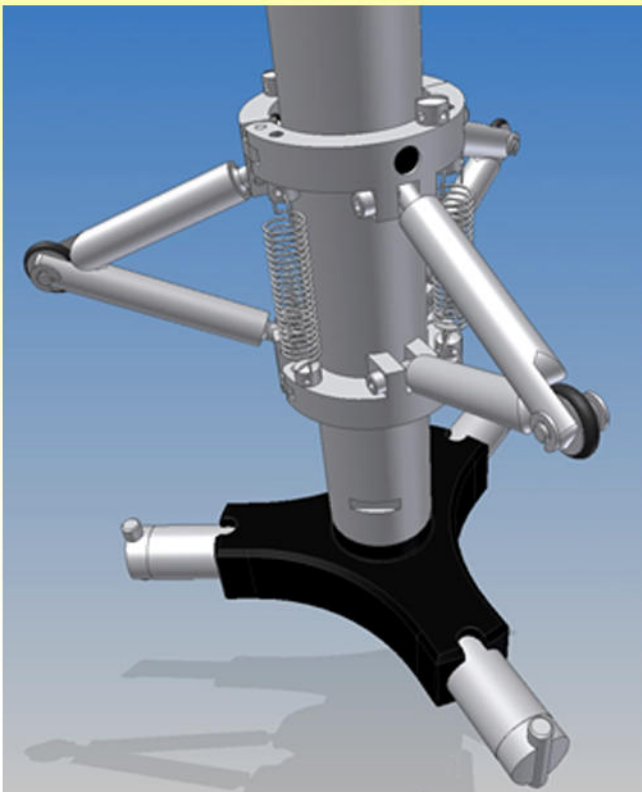
# MICROTEST AG

## Precision Instruments

### Features of the Tripod:



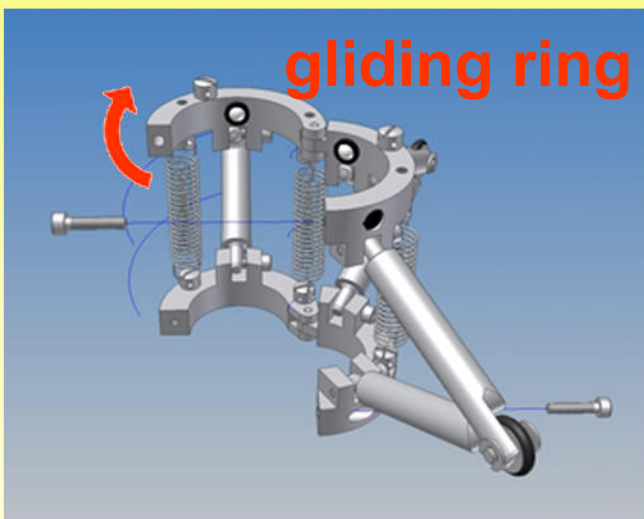
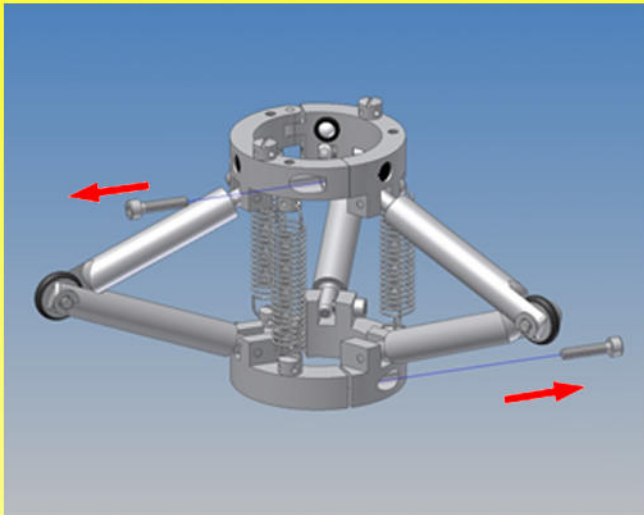
- Stable and symmetric arms length with a centric turning point.
- Due to the symmetric arms a automatic adjustment of the Tripod diameter.
- Reel with a rubber ring to protect surface of the inside diameter.
- 120° alignment of the arms as well as the extension spring to guarantee a symmetric movement and force development.



# MICROTEST AG

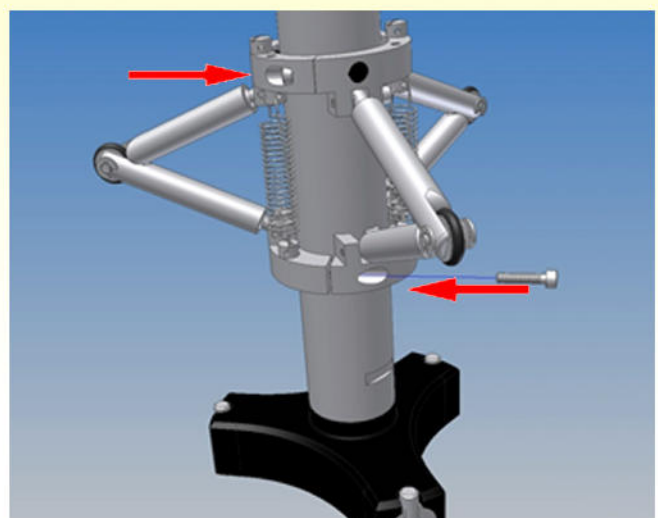
## Precision Instruments

### Mounting Instruction for the Tripod:



- Untighten the 2 screws and make sure you do not lose them.
- Make sure the gliding ring is aligned towards the ratchet of the internal micrometer.
- Open the Tripod and place it around the shaft 2/3 of length, similar to Bessel's rule.
- Close the Tripod and tighten the 2 screws.

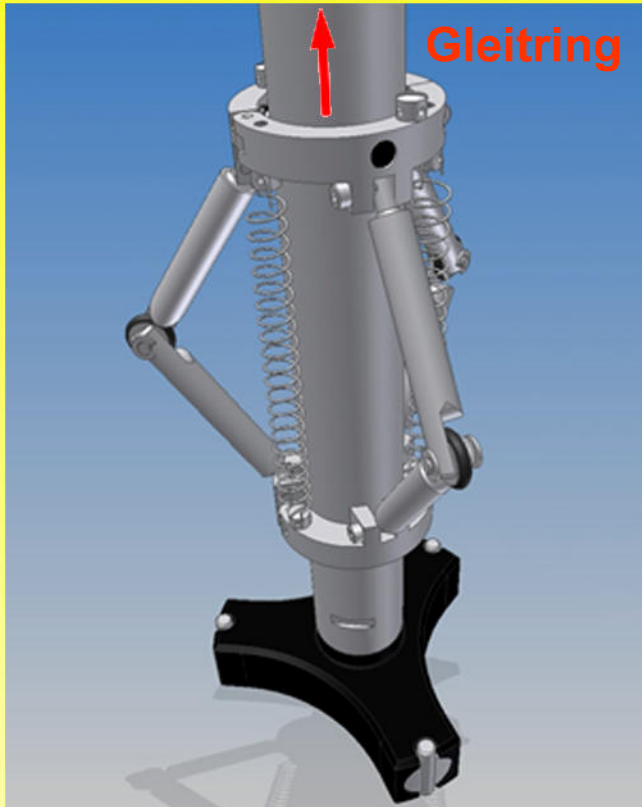
The Tripod self centring device is ready to use.



# MICROTEST AG

## Precision Instruments

### Usage of the Tripod



- Pull the Tripod gliding ring towards you and insert the Instrument into the hole
- Now let the glide ring of the Tripod go.
- Screw out feelers until they are in contact with the side of the hole and turn ratchet half a revolution 5–6 times to obtain exact centring.
- Make sure the feelers of the Internal micrometer dose not get jammed or splined.
- By extensions beyond 2 meters a Tripod every 2 /3 of the length is recommended.
- Optional a cable pull is available.

